

**Panel 4 –**  
*« Assessment of Vulnerability  
to Climate Change and Pandemics »*



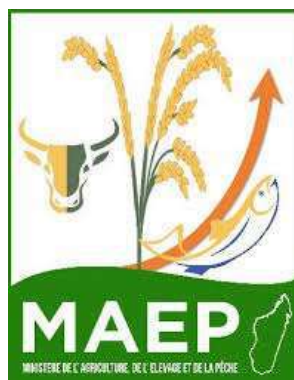
MUFPP  
Afrique



# Facing Climate change and the COVID<sub>19</sub> pandemic by strengthening urban food system's resilience in Madagascar



Food and Agriculture  
Organization of the  
United Nations



Wednesday 17, February 2021

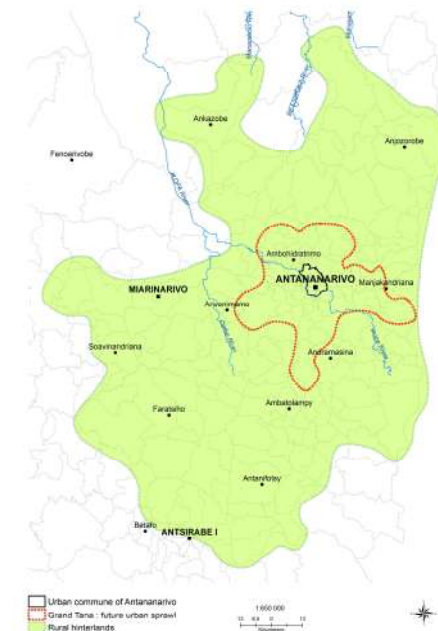
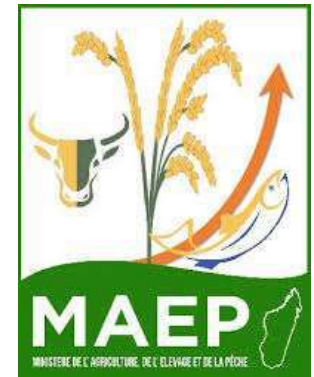


WILFRID LAURIER UNIVERSITY

**LAURIER**  
*Inspiring Lives.*

# About us : DRAEP

- **Regional representation** of the Ministry of **Agriculture, Livestock and Fisheries (MAEP)** for the Analamanga Region
- **Implements national policies** : food self-sufficiency at a regional level through the 3 sectors
- **FAO - CRFS Focal Point**
- Contribution to **post-COVID recovery** through CRFS implementation in national/regional strategies and programs
- **Analamanga : 9% of the national agricultural production**

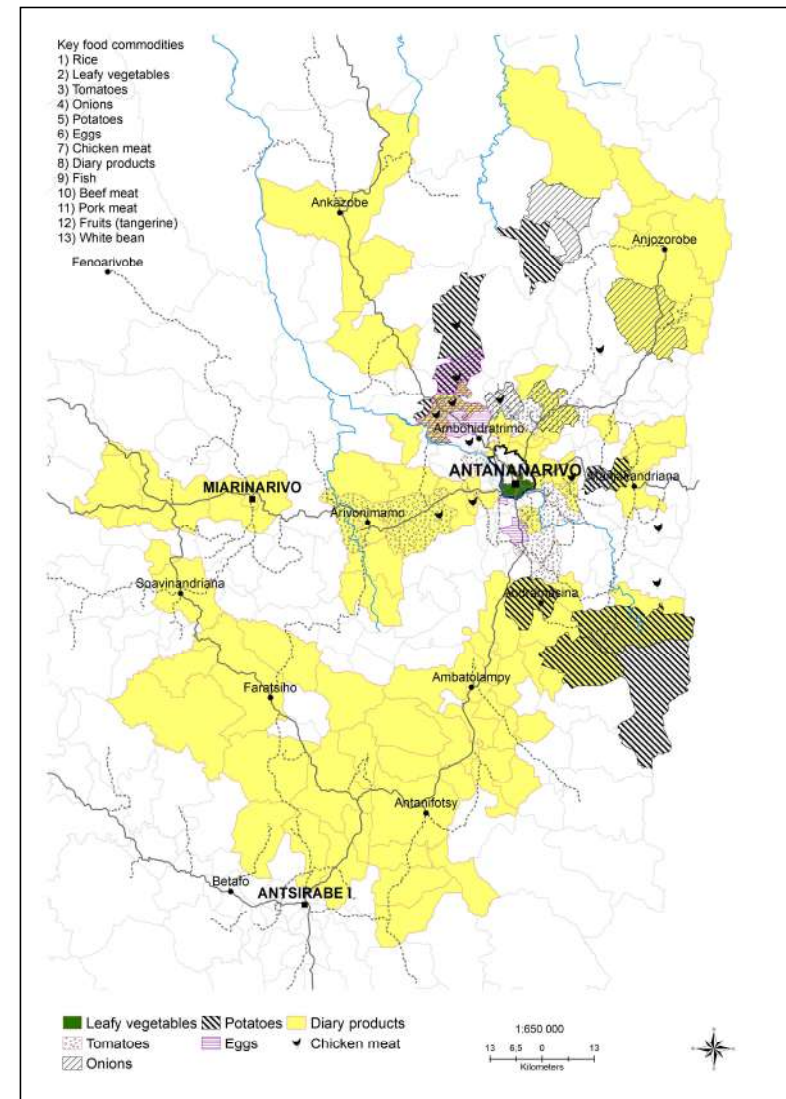


# CRFS : key commodities

The value chains prioritized for the CRFS are **rice, leafy vegetables, tomatoes, onions, potatoes, eggs, dairy products, meats (beef, pork, freshwater fish, poultry, gasy chicken)** as well as **tangerine**.

# CRFS : main climate hazards

- Erratic and intense rainfall : floods and landslides
- Extreme climatic phenomena (cyclones)
- Variation (rise) in temperatures and heat stress
- Drought and water shortages
- Bush-fires





# The COVID-19 situation

Response and interventions to ensure the functioning of the food system despite restrictions



COVID-19 | UNE | VISION

APPEL D'OFFRES/AVIS DE RECRUTEMENT



On ne peut pas rester à la maison, les enfants ne comprennent pas qu'il n'y a rien mangé. On doit sortir et chercher de quoi les nourrir.

VOUS ÊTES ICI: [Accueil](#) → [Economie](#) → 2020 → [avril](#) → 11 → [Art de vivre : Pandémie oblige, les tables d'Antananarivo nagent en eaux troubles](#)

## Art de vivre : Pandémie oblige, les tables d'Antananarivo nagent en eaux troubles

Re  
Face  
tana  
avec

**Nous avons plus de pertes que de bénéfiques, mais c'est le travail que nous avons l'habitude de faire. Si nous ne vendons pas nos fruits, ils pourrissent dans les champs et ce sera pire.**

À la guerre comme à la guerre, malgré des délaissés sur le champ de bataille pour les



Francine

PRODUCTEUR ET GROSSISTE FRUIT MAHAJO

Nous avons beaucoup de problèmes dans la brousse, nous sommes obligés de louer des voitures, car les camions ne veulent plus transporter nos fruits.

## Poulet de chair et poule pondeuse : Deux filières porteuses en péril

# PRODUCTEUR DE FRUITS – LE TRANSPORT EN PÉRIODE DE CONFINEMENT



par [2424.mg Actualité & Reportages](#) — 10 avril 2020

dans À la une, Actualité, Économie, Reportages, Social



poulet et d'œufs durant cette période. Mais cette



olailles,  
Pâques.

d'œufs est observée en ce moment », a déclaré Andriamananarivo Rabearivelo, président du conseil d'administration de Malagasy professionnels de l'élevage (MPE).



# CRFS approach helps to strengthen CRFS resilience

## 1) Support to priority value chains





# CRFS approach helps to strengthen CRFS resilience

2) Reinforce rural-urban linkages to ensure food fluxes





# CRFS approach helps to strengthen CRFS resilience

3) Align response mechanisms: vertical integration and rôle complementarity for current climate response mechanisms and COVID-19 response mechanisms



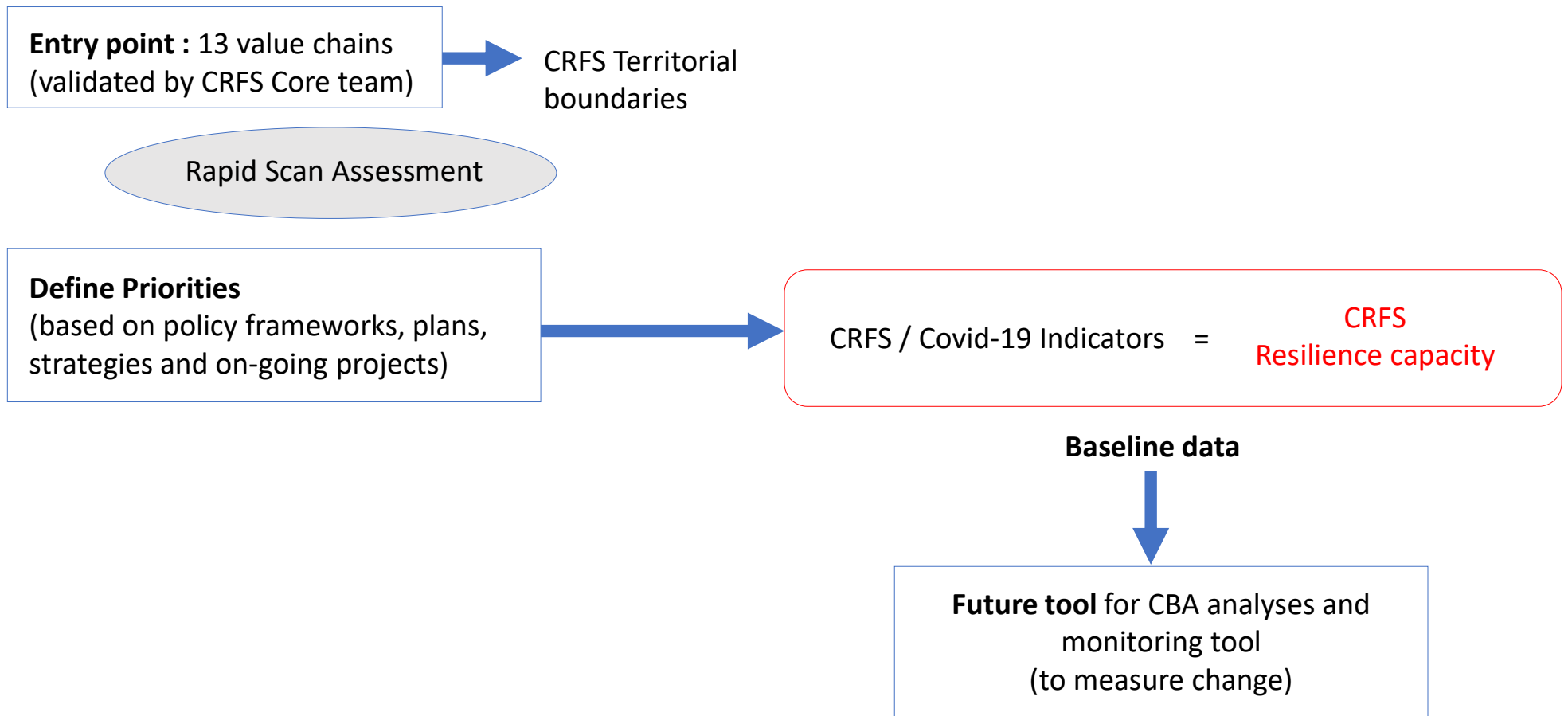
# CRFS Stakeholder Advisory Group

4) Ensure consistency of actions, create synergy between actors and create multiple response mechanisms, data sharing, establish common indicators





# How indicators are useful and what they add to the process



# How indicators are useful and what they add to the process

Example : FOOD PRODUCTION

CRFS node	Expected Outcome (link to priorities)	Impact Area	Indicator	Sub-indicator	Why (causes)	Who (can do sth.)
Food Production	Regional and local food production is more resilient to climatic shocks / stresses and to destabilization caused by epidemics (COVID-19)	Existence of plans adapted to individual farms to absorb shocks and stresses	Increase in the number of farms that have at least one strategy to resist or mitigate the effects of climatic shocks / stresses and destabilization caused by epidemics	Number of technically supervised farms (number and techniques transmitted to be specified)		
				Number of farms financially supported (number, VC and amount of support to be specified)		
				Number of VCs supported for the marketing of products resulting from resilient practices (number, VCs and type of support to be specified)		



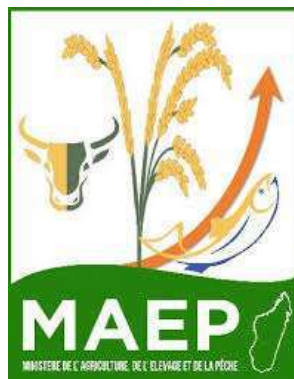
# THANK YOU VERY MUCH FOR YOUR ATTENTION

*RAZAFINDRATOANINA Vololontsoa Volatiana, DRAEP Analamanga  
Ministère de l'Agriculture de l'Elevage et de la Pêche, MADAGASCAR*

*ZULETA FERRARI Carmen, FAO MADAGASCAR*



Food and Agriculture  
Organization of the  
United Nations



**RUAF**

WILFRID LAURIER UNIVERSITY

**LAURIER**  
Inspiring Lives.